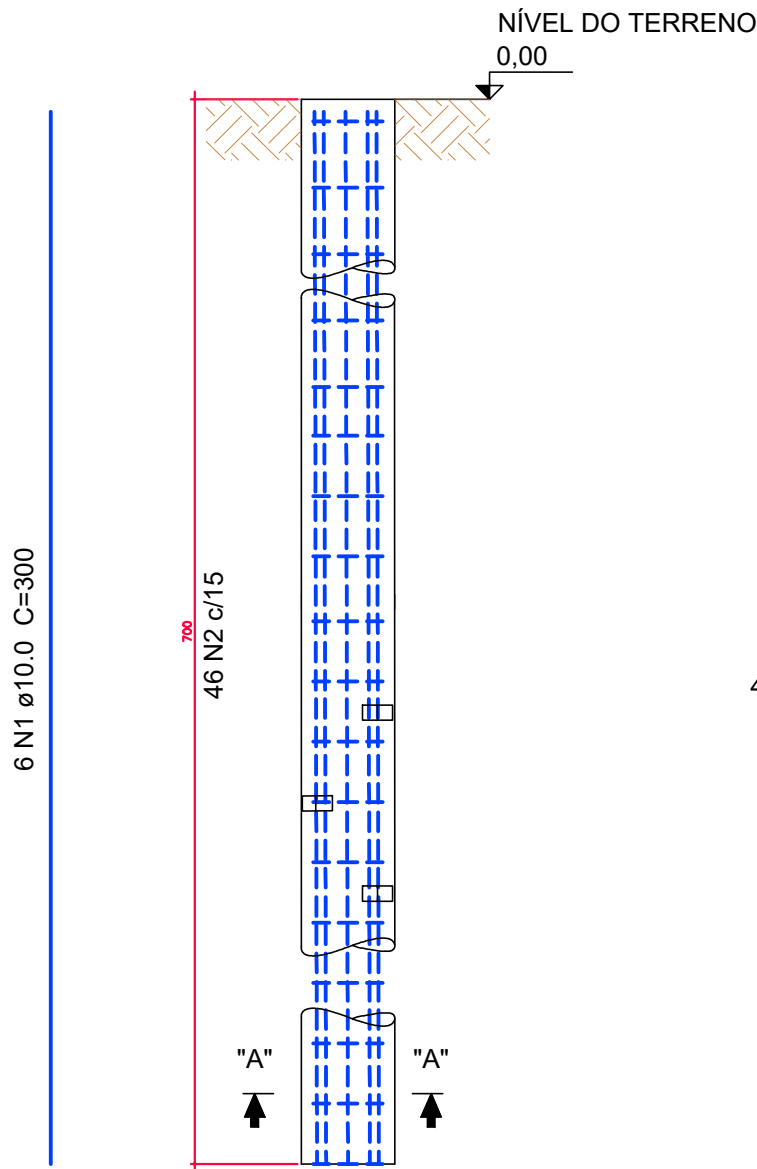
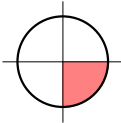
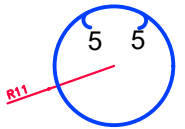
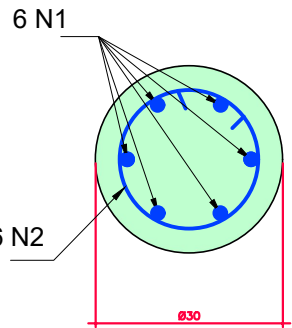


ARMAÇÃO ESTACA Ø30 (3x)
SEM ESCALA



SEÇÃO A-A



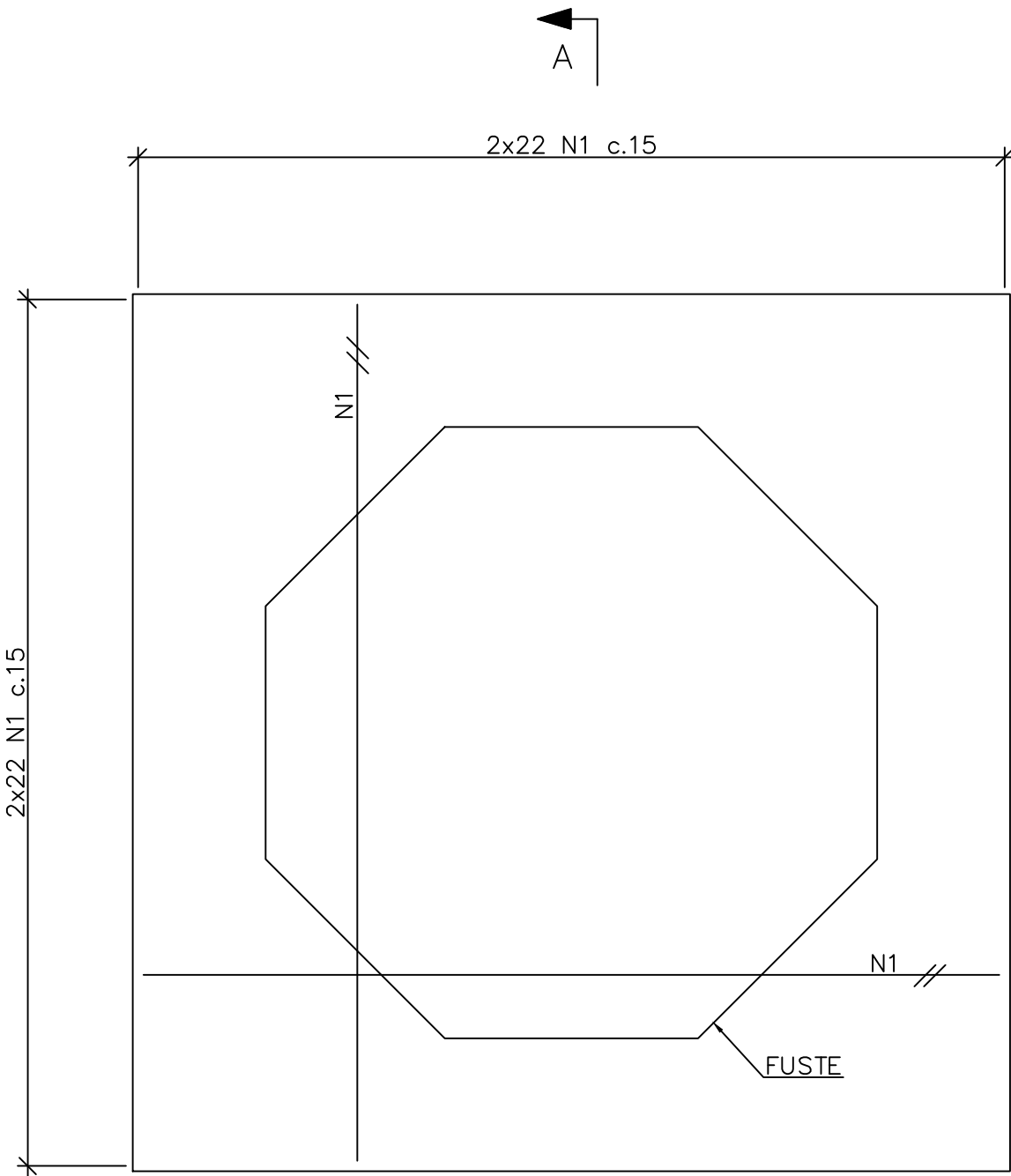
3xESTACA Ø30					
RELÇÃO DO AÇO	AÇO	N	DIAM	Q	UNIT (cm)
	CA50	1	10.0	28	710
	CA50	2	6.3	184	86
					17040
					15824

RESUMO DO AÇO			
AÇO	DIAM	C.TOTAL (m)	PESO (kg)
CA50	6.3	158	39
CA50	10.0	170	105
PESO TOTAL			
CA50	144		

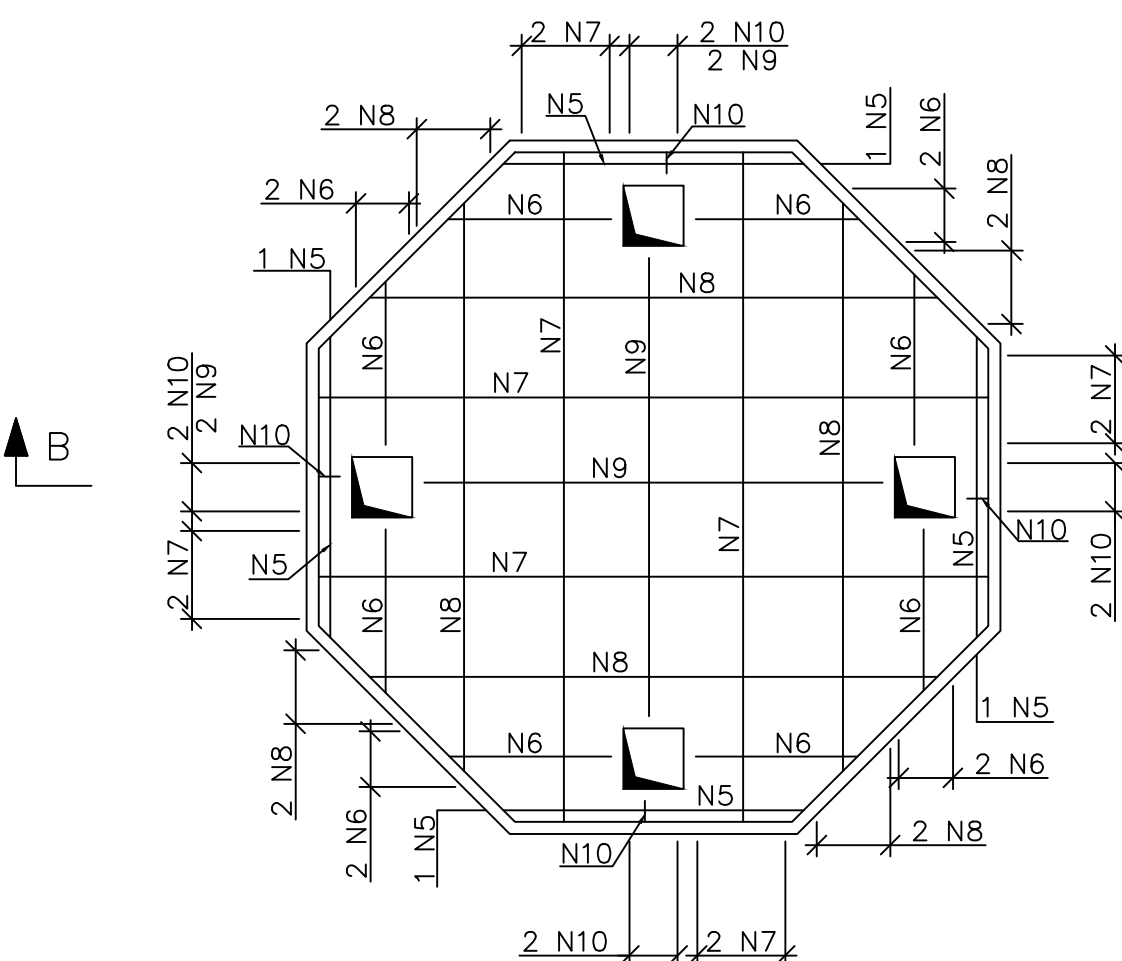
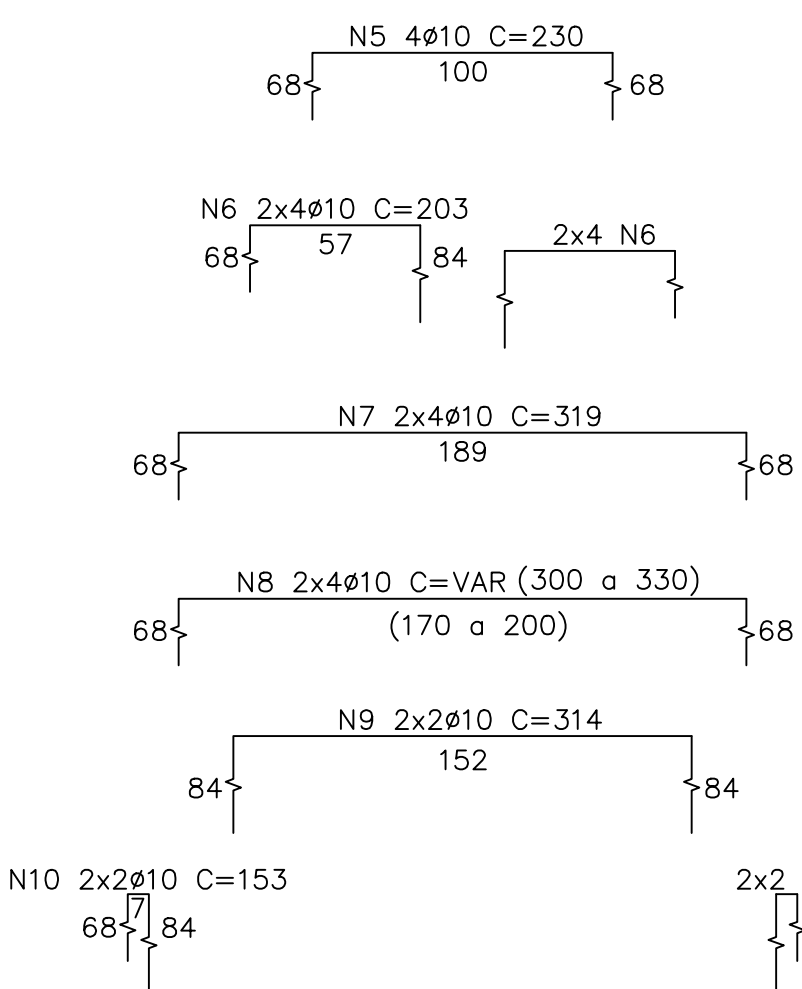
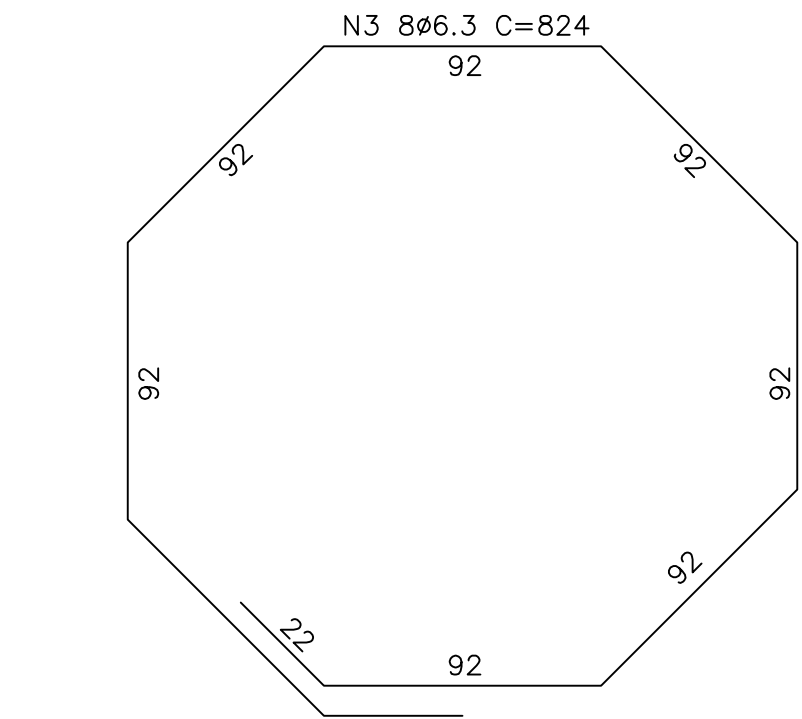
TABELA DE FERROS				
N	Ø	Q	UNIT.(cm)	TOTAL(m)
1	10	88	356	313
2	25	36	162	58
3	6.3	8	824	66
4	25	4	75	3
5	10	4	230	9
6	10	16	203	32
7	10	8	319	26
8	10	8	VAR	25
9	10	4	314	13
10	10	8	153	12

RESUMO AÇO			
AÇO	Ø	TOTAL(m)	MASSA(kg)
CA50	6.3	66	16
CA50	10	430	265
CA50	25	61	236
TOTAL (kg)			518

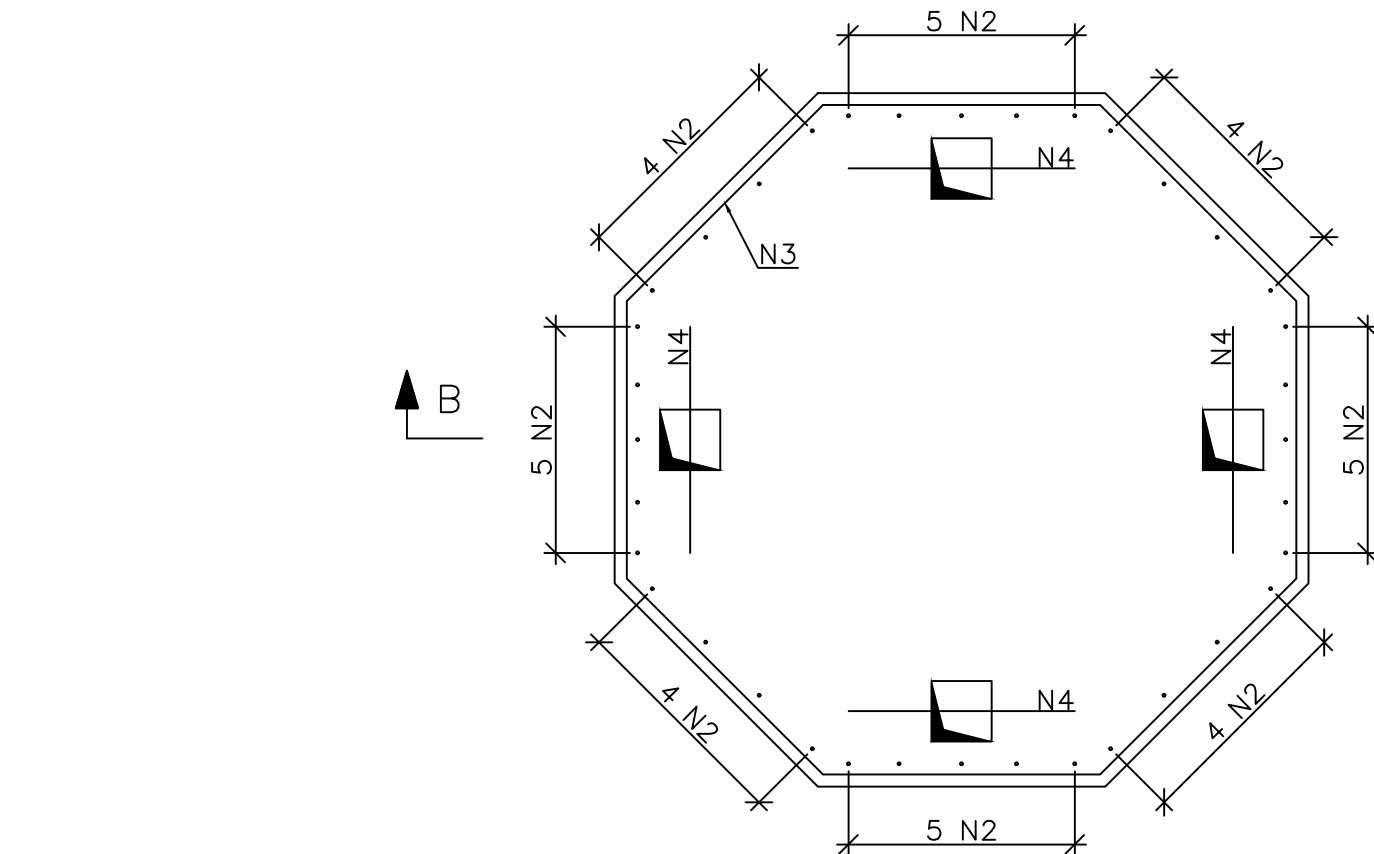
NOTAS:						
1 - MEDIDAS EM CENTÍMETROS, ELEVACOES EM METROS E BITOLAS EM mm, SALVO INDICACAO CONTRÁRIA.						
2 - CONCRETO ESTRUTURAL CLASSE C30 (A/C < 0,55). CONCRETO MAGRO CLASSE C10.						
3 - COBRIMENTO NOMINAL = 4,0cm.						
4 - DOBRAMENTO DAS BARRAS CONFORME NORMA NBR 6118.						
5 - PARA FORMA VER DES. 18_A1_PREF SANTA LUZIA_UMEI BOM DESTINO_DETALHADO_EC_V0 (RMC-PAV-00421-CC-DD-0018).						
02	ATENDENDO COMENTÁRIOS		20/01/22	S.AT.	G.C.A.	F.L.S.
01	PARA EXECUCAO		23/11/21	E.P.F.	P.M.S.	J.R.S
00	EMISSAO INICIAL		17/09/21	S.AT.	G.C.A.	F.L.S.
REV.	DESCRICAO		DATA	EXEC.	VERIF.	APROV.
CONTRATADA: VIAVOZ EIRELI			AUTORIA DE PROJETO: FABRICIO LACERDA SILVA		RT: JOSE H. R. BAESE	
			REG. CREA: 88752/D		REG. CREA: 53.341/D	
			ASS: 		ASS: 	
CONTRATANTE: PREFEITURA MUNICIPAL DE SANTA LUZIA						
PROGRAMA: PROJETO PROGRAMA PROINFANCIA						
MUNICIPIO/AREA: SANTA LUZIA						
TITULO: UMEI BOM DESTINO PROJETO ESTRUTURAL DETALHADO BASE DO RESERVATORIO TACA - ARMACAO						
DATA: 17/09/2021			ESCALA: INDICADA		PRANCHA:	
ARQUIVO: 19_A1_PREF SANTA LUZIA_UMEI BOM DESTINO_DETALHADO_EC_V0					19/21	



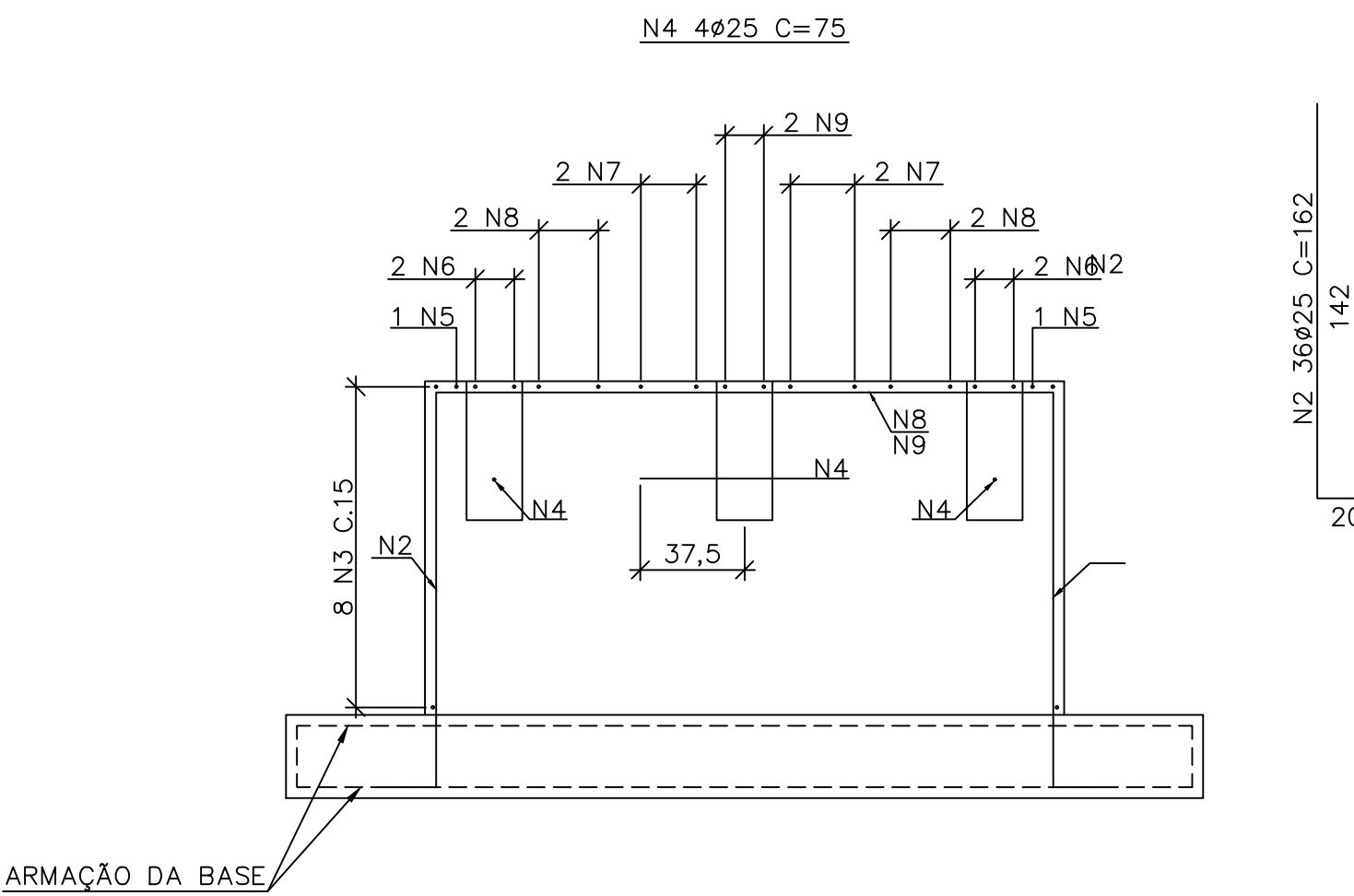
BASE - PLANTA
ESC.1:25



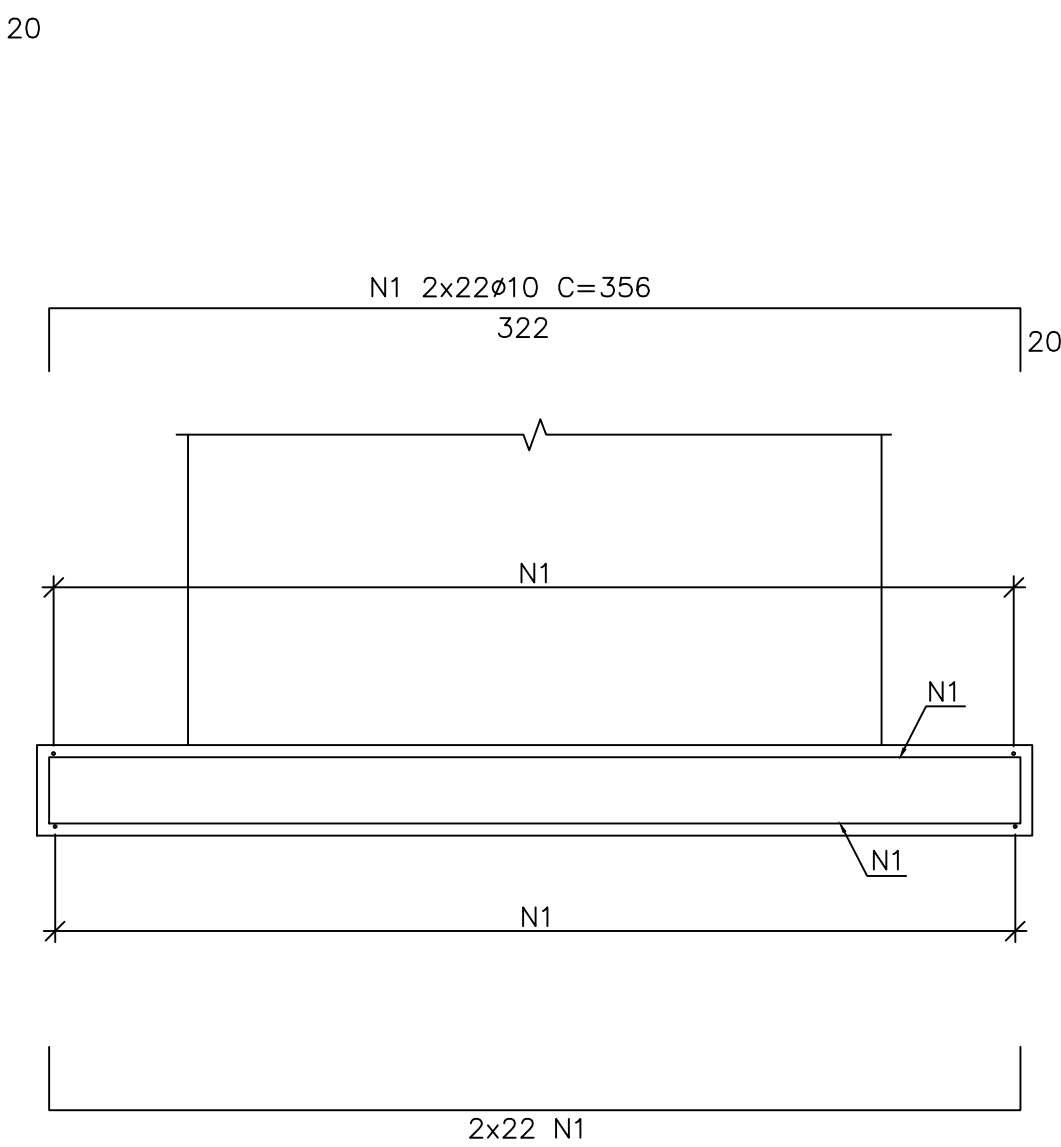
FUSTE - PLANTA TOPO
ESC.1:25



FUSTE - PLANTA
ESC.1:25



CORTE B - B
ESC.1:25



CORTE A - A
ESC.1:25